



CGREF1 Polyclonal Antibody

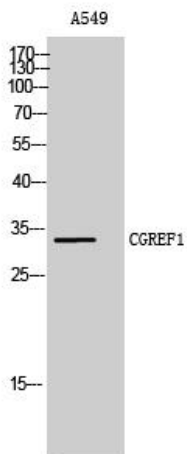
Catalog No	YP-Ab-15886
Isotype	IgG
Reactivity	Human;Rat;Mouse;
Applications	WB;IHC;IF;ELISA
Gene Name	CGREF1
Protein Name	Cell growth regulator with EF hand domain protein 1
Immunogen	The antiserum was produced against synthesized peptide derived from human CGREF1. AA range:241-290
Specificity	CGREF1 Polyclonal Antibody detects endogenous levels of CGREF1 protein.
Formulation	Liquid in PBS containing 50% glycerol, 0.5% BSA and 0.02% sodium azide.
Source	Polyclonal, Rabbit,IgG
Purification	The antibody was affinity-purified from rabbit antiserum by affinity-chromatography using epitope-specific immunogen.
Dilution	WB: 1/500 - 1/2000. IHC: 1/100 - 1/300. ELISA: 1/40000.. IF 1:50-200
Concentration	1 mg/ml
Purity	≥90%
Storage Stability	-20°C/1 year
Synonyms	CGREF1; CGR11; Cell growth regulator with EF hand domain protein 1; Cell growth regulatory gene 11 protein; Hydrophobestin
Observed Band	31kD
Cell Pathway	Secreted .
Tissue Specificity	Brain,Fetal brain,Testis,Thalamus,
Function	caution:The sequence shown here is derived from an Ensembl automatic analysis pipeline and should be considered as preliminary data.,function:Able to inhibit growth in several cell lines.,induction:By p53.,similarity:Contains 2 EF-hand domains.,
Background	caution:The sequence shown here is derived from an Ensembl automatic analysis pipeline and should be considered as preliminary data.,function:Able to inhibit growth in several cell lines.,induction:By p53.,similarity:Contains 2 EF-hand domains.,
matters needing attention	Avoid repeated freezing and thawing!



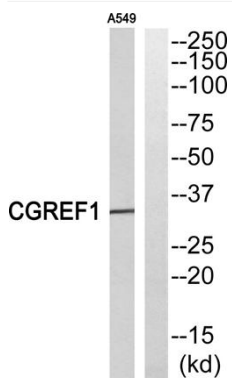
Usage suggestions

This product can be used in immunological reaction related experiments. For more information, please consult technical personnel.

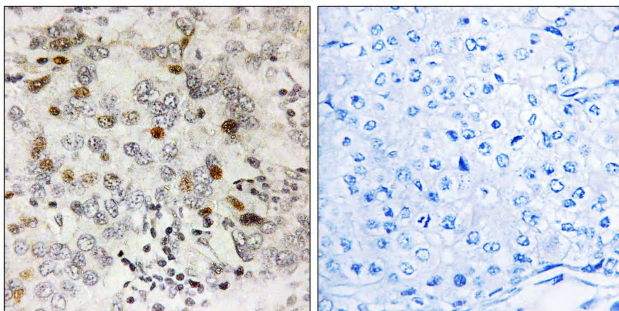
Products Images



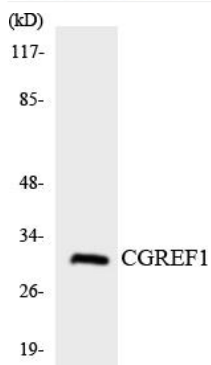
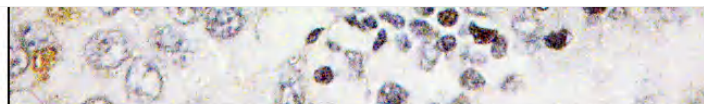
Western Blot analysis of A549 cells using CGREF1 Polyclonal Antibody



Western blot analysis of CGREF1 Antibody. The lane on the right is blocked with the CGREF1 peptide.



The lane on the right is blocked with the CGREF1 peptide.



Western blot analysis of the lysates from K562 cells using CGREF1 antibody.